

## What is already happening?

### Shipping

A new Chapter was added to MARPOL 73/78 which will significantly reduce the amount of greenhouse gas emissions from ships.

### Regions:

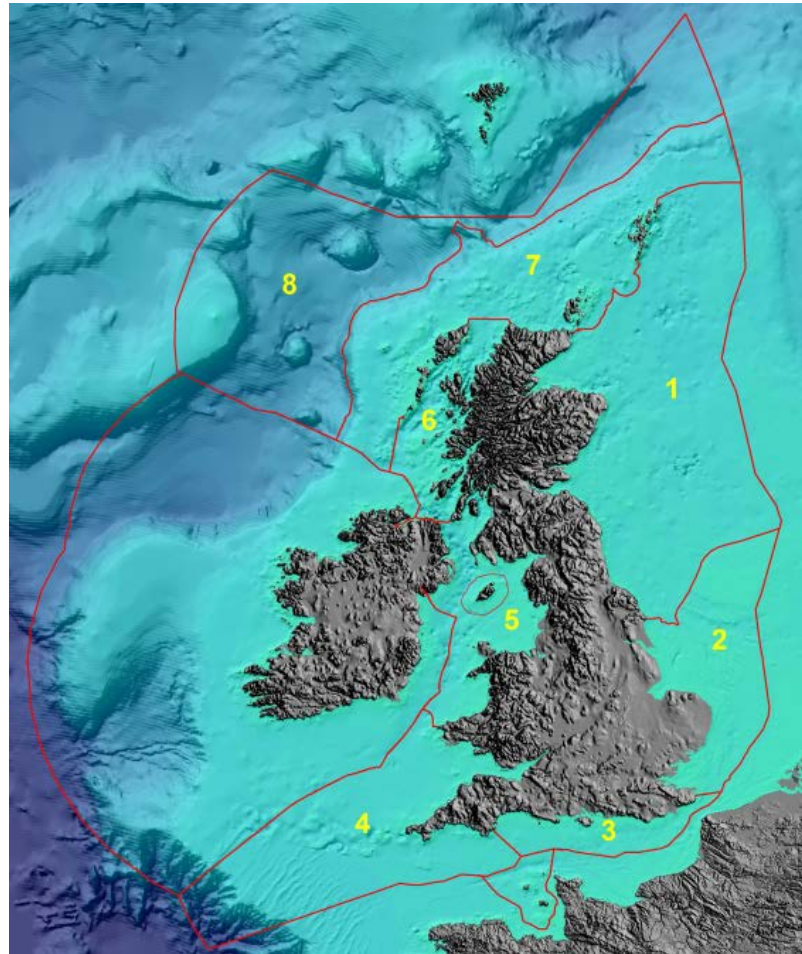
CP 2 All regions

### Ports

Major Port Authorities in the UK have developed Climate Change Adaptation Plans which have focussed interest on the need to consider climate change impact.

### Regions:

CP 2 All regions



### CP2 regions

1. Northern North Sea
2. Southern North Sea
3. Eastern English Channel
4. Western English Channel, Celtic Sea and South-West Approaches
5. Irish Sea and North Channel
6. Minches and Western Scotland
7. Scottish Continental Shelf
8. Atlantic North-West Approaches, Rockall Trough and Faroe-Shetland Channel

## What could happen?

### Shipping

The melting of Arctic ice will further encourage the use of polar transit routes between Europe and Asia by commercial ships. There could be limited opportunities for shipping using the UK's Northern ports to engage in exploration for the Arctic Ocean's natural resources.

### Regions:

CP2 Region 1

### Ports

The need to reduce the carbon footprints of land transport modes could provide new opportunities for the development of short sea shipping based on intermodal systems using UK ports.

### Regions:

All regions